

Voetklep met korf EPDM

Check valves are valves that interleave in a pipe, prevent the passage of flow in a certain direction. Their installation should be in all cases where it is desired to prevent backflow. It used with protection basket, it becomes a foot valve for use in the aspirations of bulges with maximum security. Their design allows a smooth operation with low charge losses and with a guaranteed 0.1-bar closing pressure.

Check valve characteristics

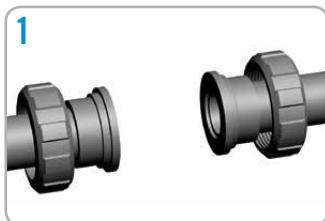
- Valve dedicated to agriculture and swimming pool.
- Body and closing cone made of PVC-U.
- EPDM o-rings with option VITON for applications where there are problems of corrosion by chemicals.
- Protective screen made of PP that prevents the entry of large solids in the system.
- Can be used either vertically and horizontal.
- Body marked with flow direction.
- Avoid problems produced by waterhammer effect.
- Perfect for clean water uses.
- Watertightness guaranteed with 0,1 bar of closing pressure.
- Installation recommended with a distance at least 5 diameter when installed behind pumping.
- PN 16 in Ø20 to Ø63 and in Ø75 from Ø110.

Sok



Art. Nr. 1662

Check valve



1. Introduce the nut in the pipe and glue the valve outlet. Glue must be dry before next step.



2. Install the valve in the proper direction, marked by the flow indicator

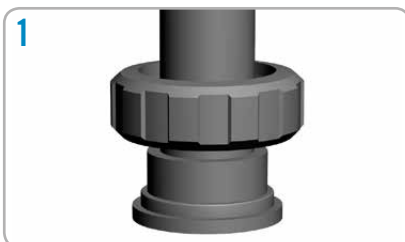


3. Tighten the nuts.



4. The valve is installed with total security.

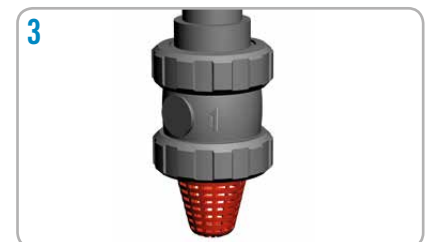
Foot check valve



1. Introduce the nut in the pipe and glue the valve outlet. Glue must be dry before next step.

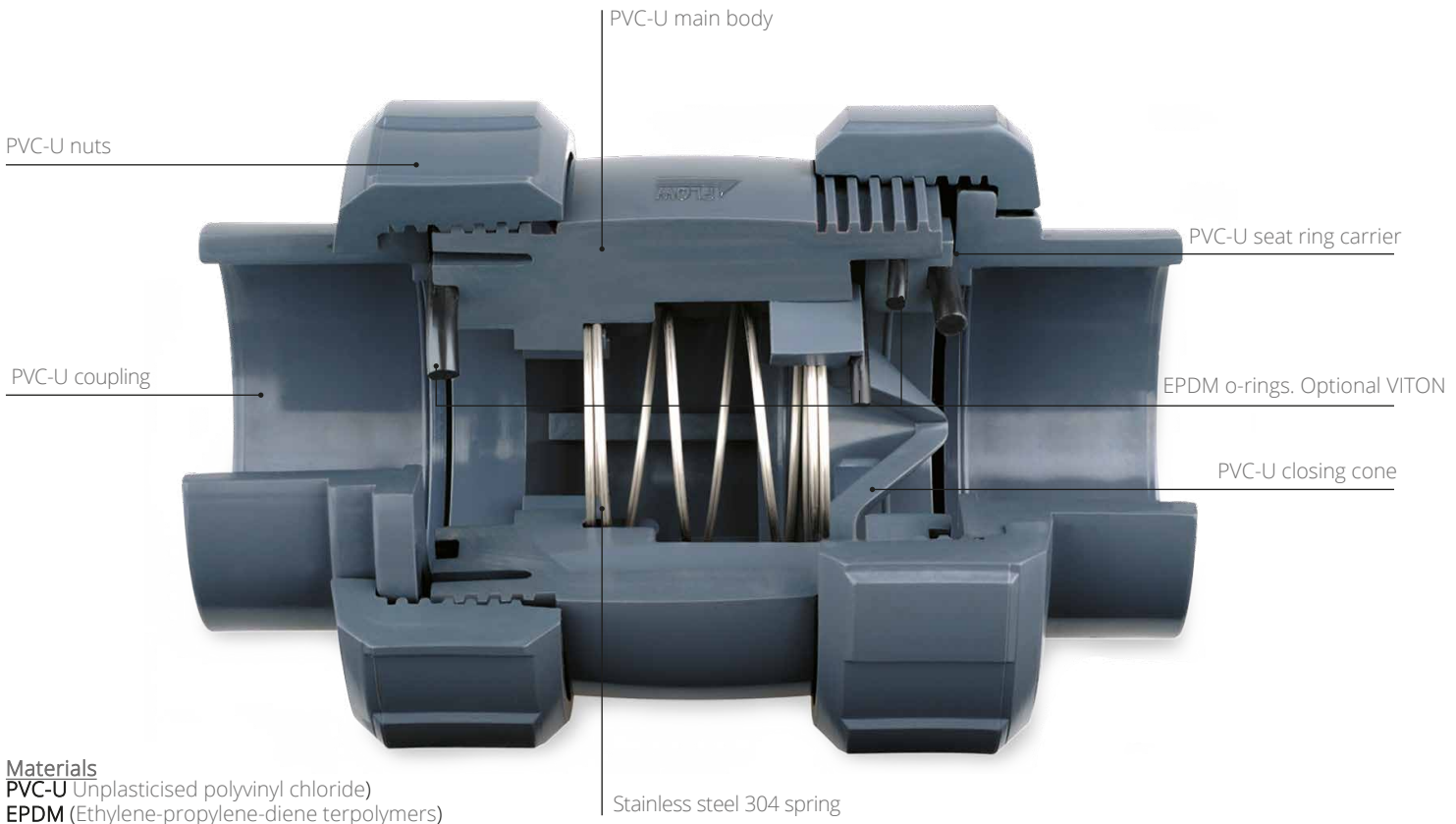


2. Tighten the nut in the valve body.



3. The valve is installed with total security.

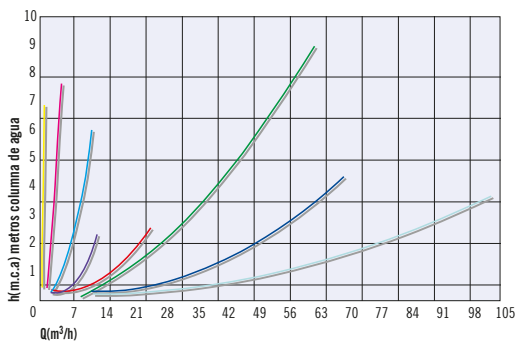
Voetklep met korf EPDM



Materials
PVC-U Unplasticised polyvinyl chloride
EPDM (Ethylene-propylene-diene terpolymers)

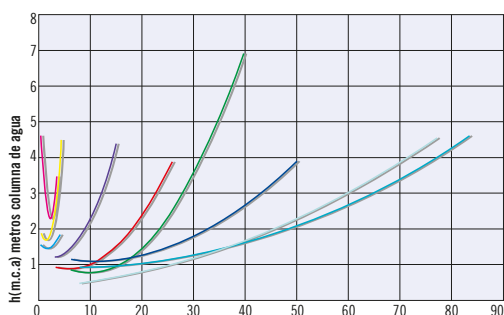
Technical data

Check valve



- D110-4" ■
- D90-3" ■
- D75-2 1/2" ■
- D63-2" ■
- D50-1 1/2" ■
- D40-1 1/4" ■
- D32-1" ■
- D25-3/4" ■
- D20-1/2" ■

Foot check valve



- D20-1/2" ■
- D25-3/4" ■
- D32-1" ■
- D40-1 1/4" ■
- D50-1 1/2" ■
- D63-2" ■
- D75-2 1/2" ■
- D90-3" ■
- D110-4" ■

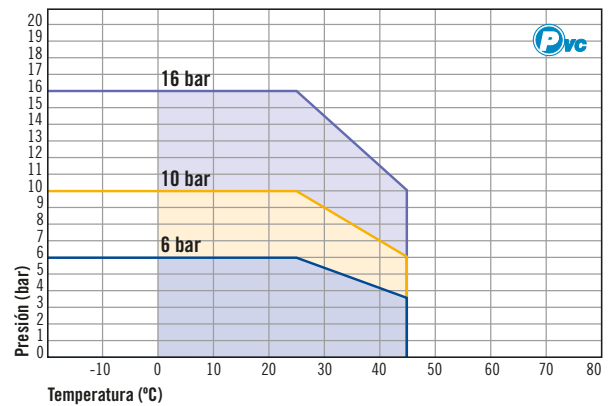


Table of nominal pressure

	PN (bar)	PN (PSI)
Ø20 - 63	PN16	232
Ø75 - 110	PN10	145